

## What Project Bridge Watch is **NOT**

- It is **not** a new idea
- It is **not** just a West Salem issue
- It is **not** somebody else's problem

## What Project Bridge Watch **IS**

- A decades-long idea
- A REGIONAL issue
- Everyone's problem

A new bridge has been discussed repeatedly for over forty years. Study after study has been conducted at high cost to the taxpayer's pocket book. Environmental impact studies. Capacity studies. Transportation plans. Location reports. You name it, it's been analyzed, 'qualitized', and quantified, primarily at taxpayer expense.

It is time to finish the studies and begin the work. Join us as we work towards a new bridge to handle traffic that has doubled since the current bridges were constructed.

## Everyone's Problem

We all need a third bridge: Lincoln County, Marion County, Polk County, Tillamook County, West Salem, Yamhill County, agriculture, private industry, and tourists.



**Agriculture:** Most of the fruit, nuts, and vegetables produced locally must cross the Willamette River to be processed at plants. Grass seed and grains may be cleaned and/or bagged here, but most large scale markets require getting a truck to Interstate 5. The same is true for the Christmas tree and wood products industry (which includes regional manufacturing of hot tubs, wood cabinets, travel trailers, and finished lumber).

**Industry:** Small industry also requires easy access to Interstate 5 in order to thrive. In fact, poor interstate access is one of the reasons cited for Tyco (one of the largest employers in Polk County) closing its plant in Dallas, OR in December of 2006.

### Bridge the Gap!



**Tourism:** The beautiful Oregon coast, wine country, Spirit Mountain Casino, Chinook Winds Casino, mountain bike traffic, and all of the small businesses sustained by tourism

dollars west of Marion County need smooth access to the only major Interstate running throughout the Willamette Valley. It is critical that we remove any obstacles to the tourism trade, including bottlenecks on our major bridges and roadways.

Agriculture, private industry, and tourism provide badly needed jobs, ensuring the continued existence of our way of life here in the Willamette Valley. We need to fight to keep those jobs for our families. One of the best ways to ensure a future for our children is by enhancing our local infrastructure, including the roads and bridges.

# We Need Your Help!!

Bridge Watch  
...Serving Polk County and Beyond



## Urgent Call for Letters of Support!

**It is vital that we show tangible support for the construction of a third bridge.**

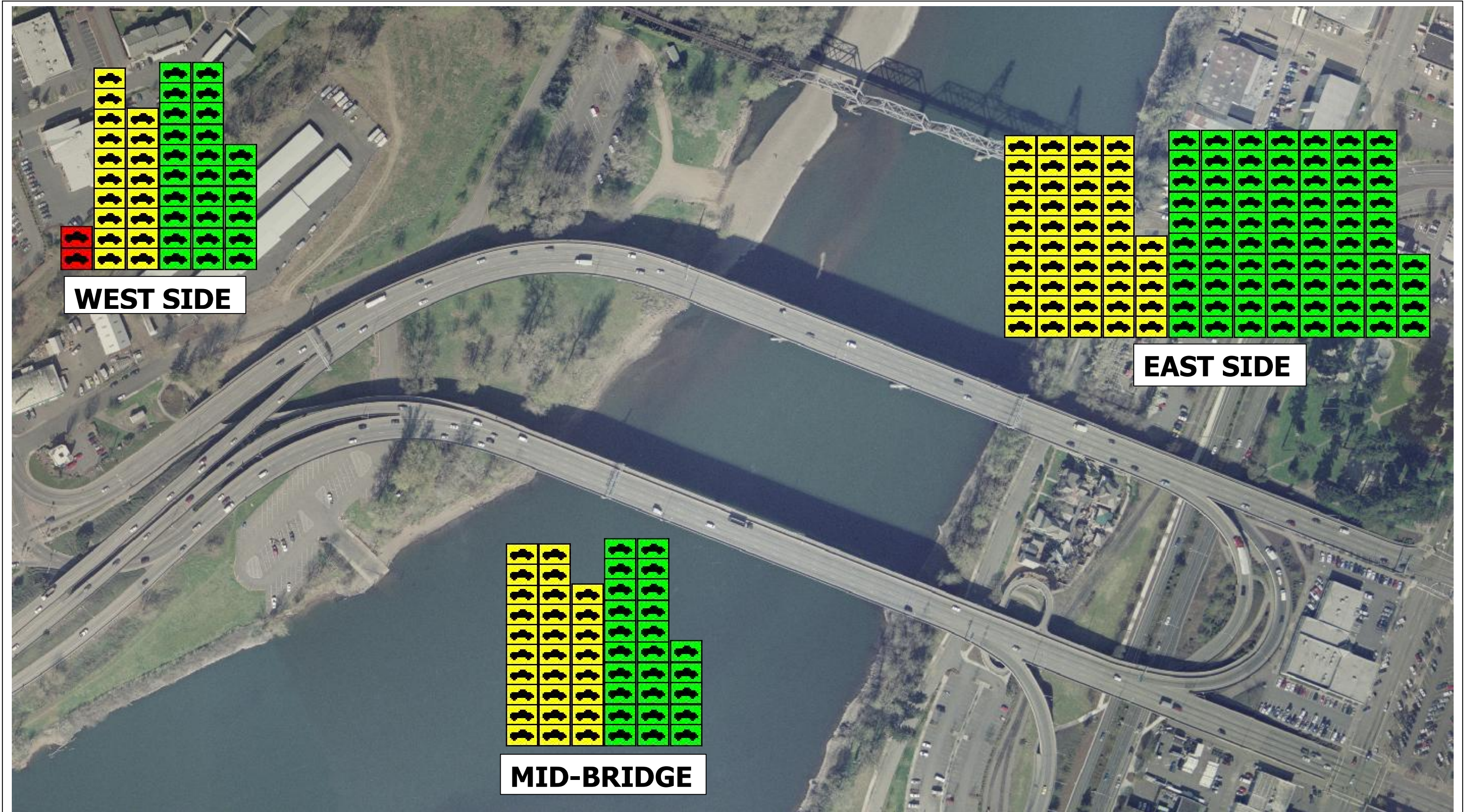
Please send your letters to the address below, or visit us on the web at [www.bridgewatch.net](http://www.bridgewatch.net) for more options.

**Project Bridge Watch** seeks to construct a third bridge across the Willamette River connecting the western Willamette Valley and the central Oregon coast to the I-5 corridor. This vital tie supports not just Polk County residents, but also major industry and the tourism trade so crucial to Oregon's economy.

Polk County Board of Commissioners  
850 Main Street  
Dallas, OR 97338  
Phone: (503) 623-8173  
Email: [luker.becky@co.polk.or.us](mailto:luker.becky@co.polk.or.us)

# BRIDGE WATCH

## MARION/CENTER STREET BRIDGE ACCIDENTS (2000-2006)

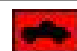




**WEST SIDE**

**EAST SIDE**

**MID-BRIDGE**

**Accident Legend**

-  Fatal Accidents (2)
-  Non Fatal Injury Accidents (91)
-  Property Damage Accidents (125)

**Community Impact of 218 Accidents**

**3-Dead    145-Injured    460-Vehicles Involved**

Accident information provided by the Transportation Date Section, Crash Analysis and Reporting Unit. Aerial Photo provided by the City of Salem. Analysis and map composition completed by Polk County GIS. Accidents summarized from Milepost 25.45-26.17. Map was produced on 7/1/07.